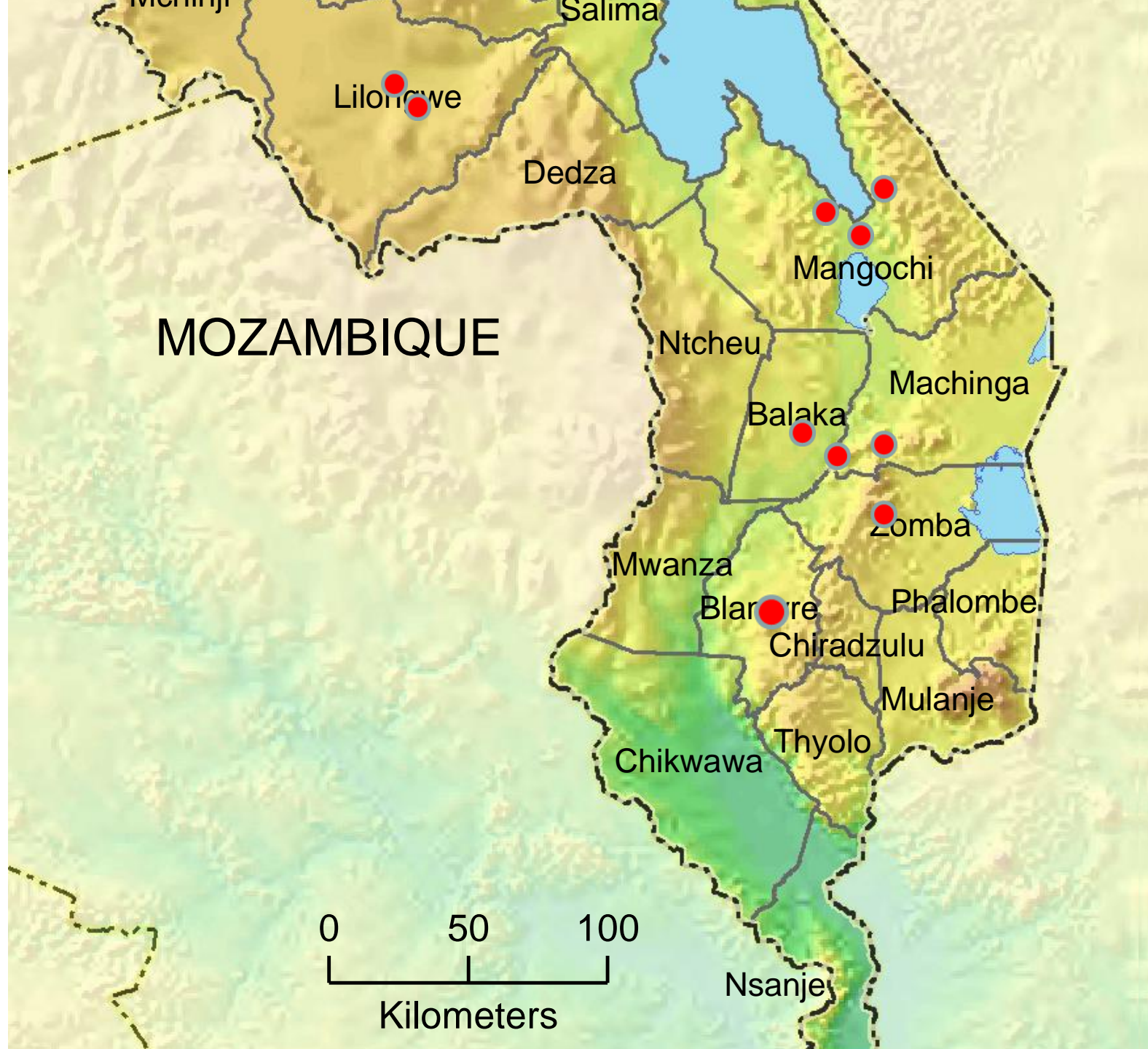


# Modernizing Extension and Advisory Services (MEAS) Symposium 2013

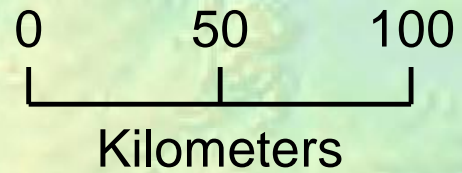
**Malawi Rapid Scoping Mission  
9 – 27 January 2012  
De-Briefing**

**Brent M. Simpson, Michigan State University  
Geoffrey Heinrich, Catholic Relief Services  
Grace Malindi, Consultant**





MOZAMBIQUE



# Mission Contacts --Lilongwe:

USAID – Malawi

Min of Ag, Irrig and Water Development

- Permanent Secretary
- PS2 (Dr. Luhanga)
- ASWAp Coordinator
- Director DAES
- DAES Branch Heads/SMS
- Green Belt Initiative
- ADD/DADO
- EPA: AEDC, AEDOs, Lead Farmers

Natural Resources College

Bunda College of Agriculture

- Dean, Development Studies
- Department Head – Extension
- 2 x Extension Lecturers

Dept of Agricultural Research Services

- Director
- Head, Legume platform

CGIAR Centers (ICRISAT, CIAT, IITA, ICRAF)

FICA (Flanders International Cooperation Agency)

Irish Aid

NGOs

- CISANET (Network for NGOs/Ag)
- World Vision
- Catholic Relief Services
- Land O'Lakes (Malawi Dairy Development Alliance)
- Total Land Care
- MLI Bridging Activity

Private Sector

- Alliance 1 Tobacco company
- Malawi Milk Producers Association
- African Institute of Corporate Citizenship (AICC)
- Rural Market Development Trust (RUMARK – Agro-dealers)

Farmers' organizations

- NASFAM
- Farmers Union of Malawi

Farm Radio Malawi

Farmer Voice Radio

# Mission Contacts – Field Visits

## Mangochi District

- DADO Office
- 4 x Subject Matter Specialists (SMS)
- 2 x EPAs (ADEC/ADEOs/Lead Farmers/Stakeholder Panels)

## Machinga ADD

- Project Manager, Deputy Project Manager, SMS – Extension Methodology

## Balaka District

- DADO Office
- 4 x SMS
- NASFAM Office
- Malawi Cotton Company
- Farm Income Diversification Project

## Machinga EPA Model Village

- AEDo, GVH, Lead Farmers

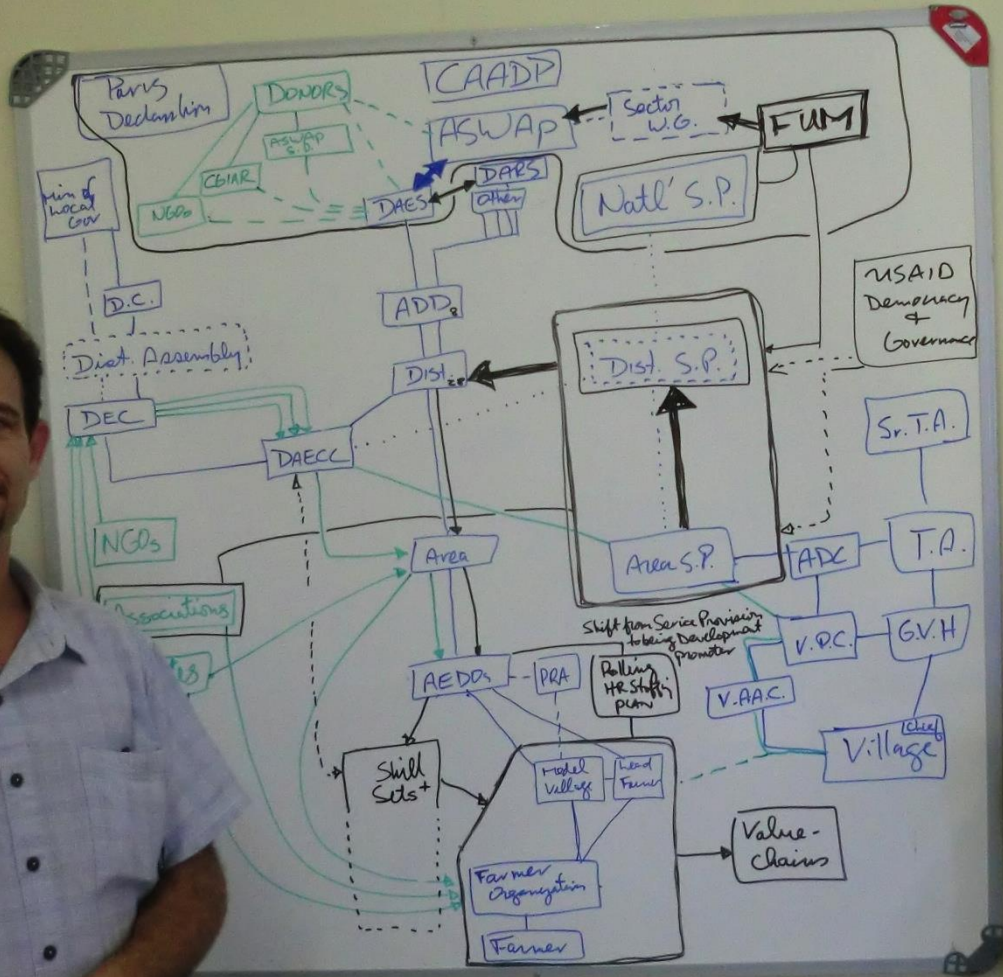
## Zomba District

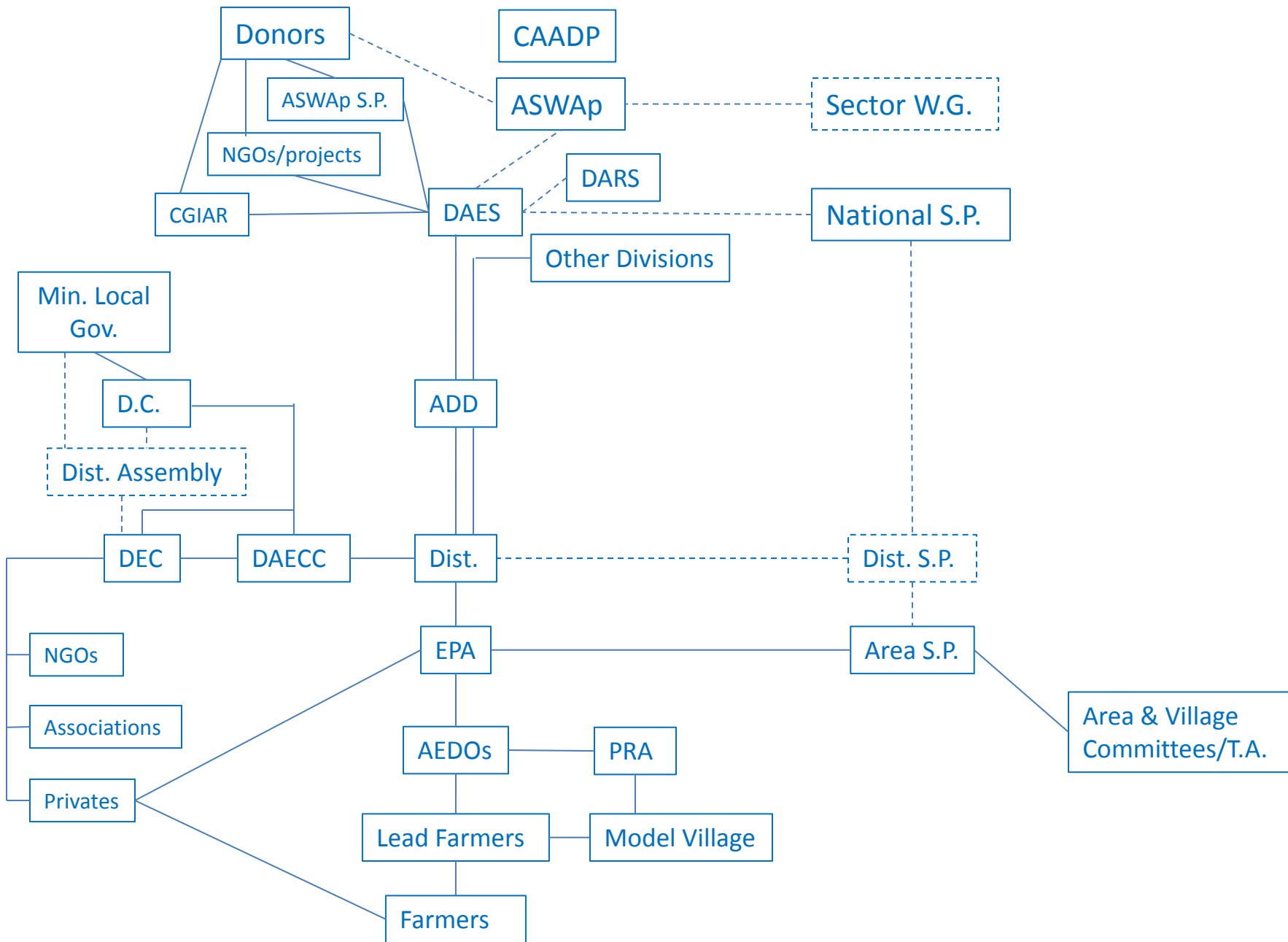
- DADO

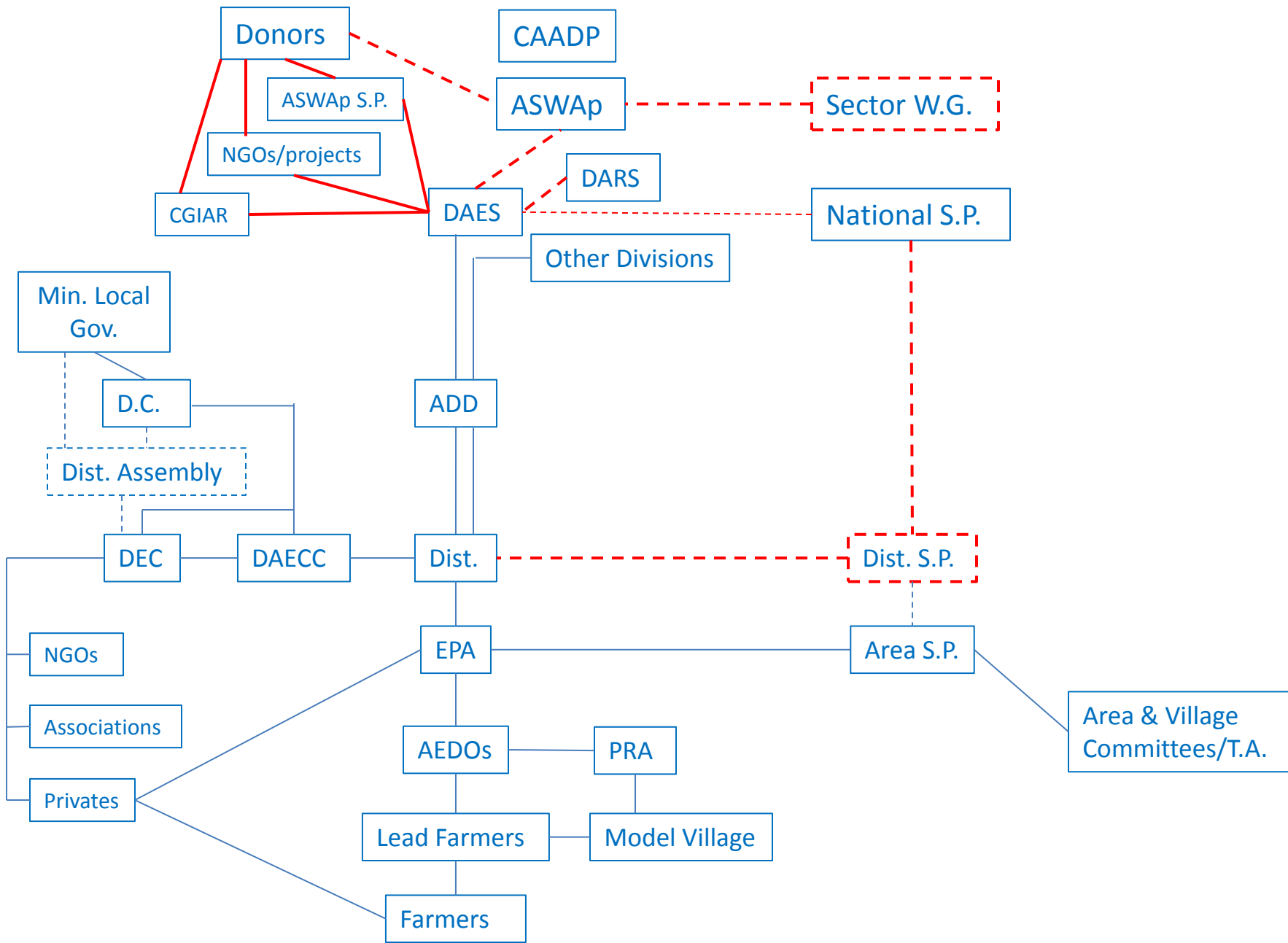
## Blantyre City

- WALA (Agro-Enterprise TQC, Ag Production TQC)
- Great lakes Cotton Company
- Total Land Care (field visit)

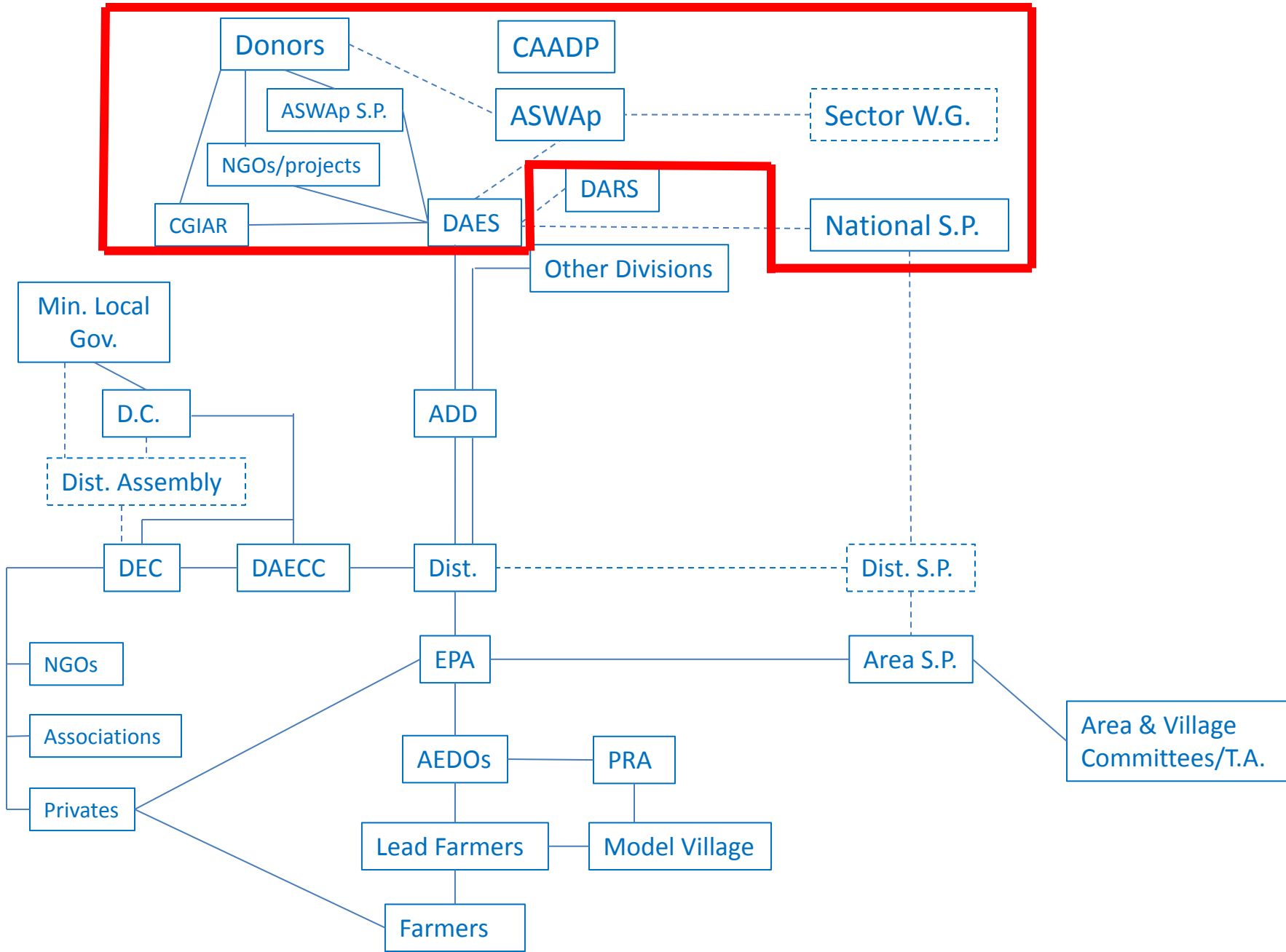


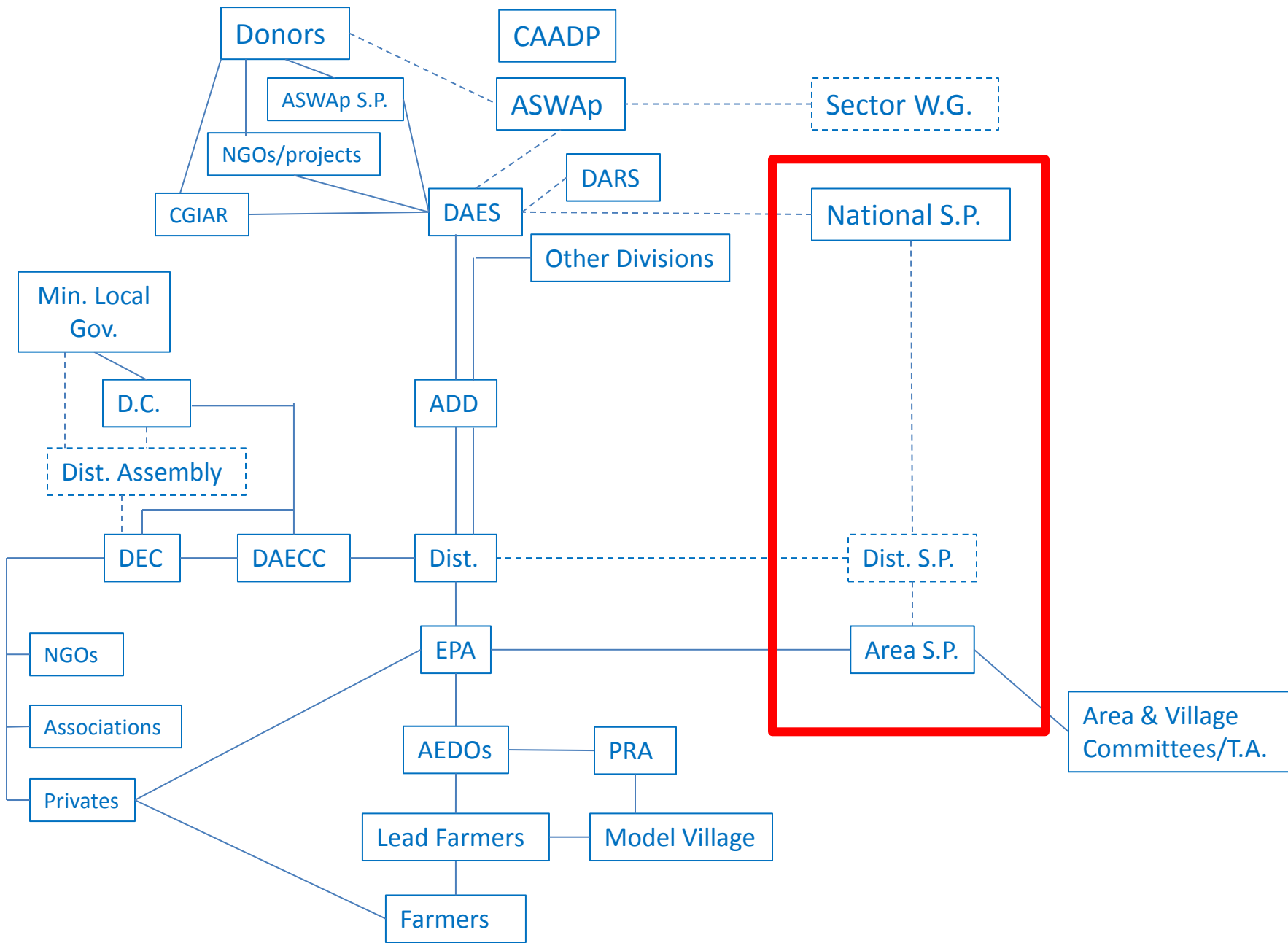


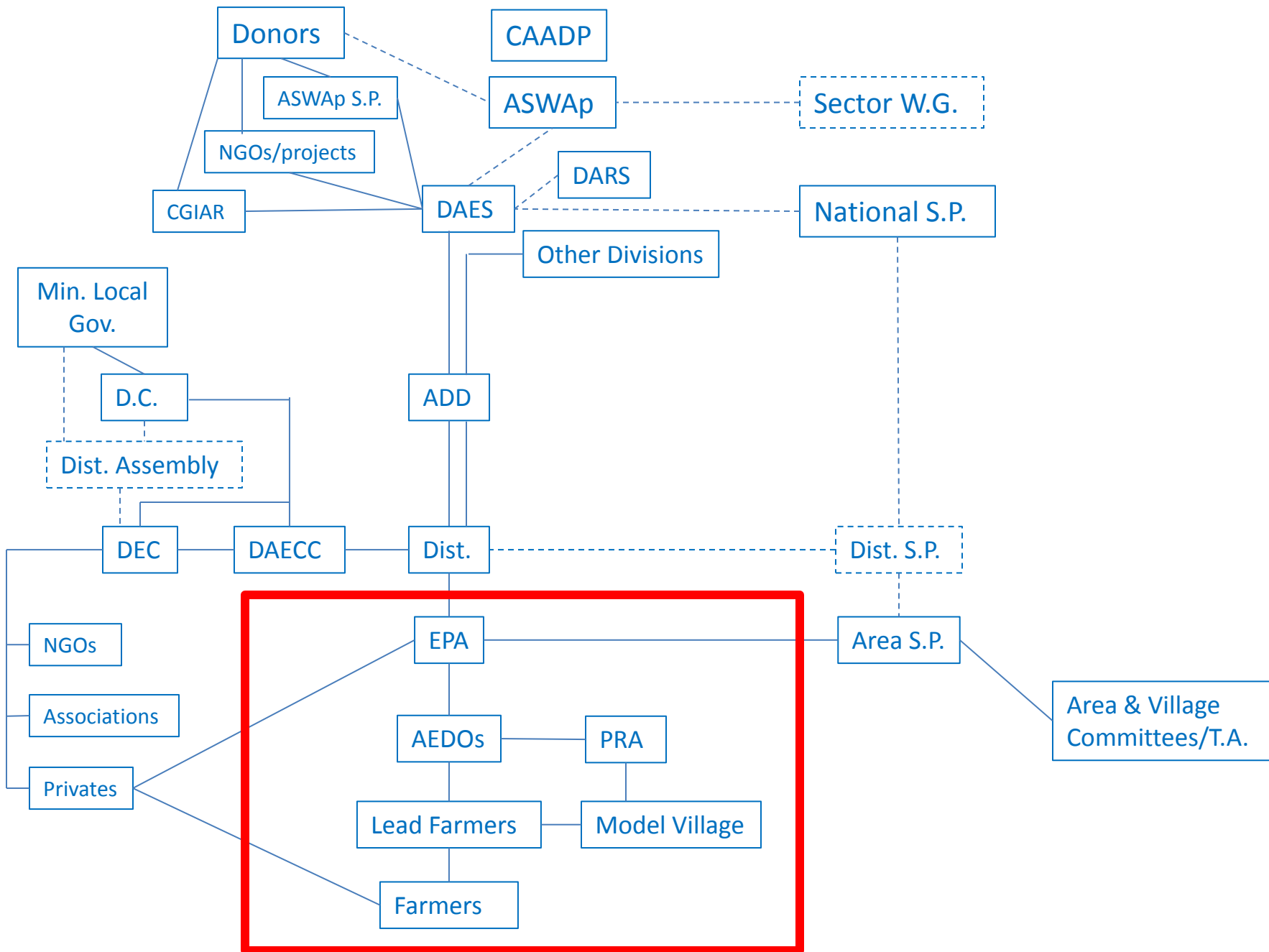


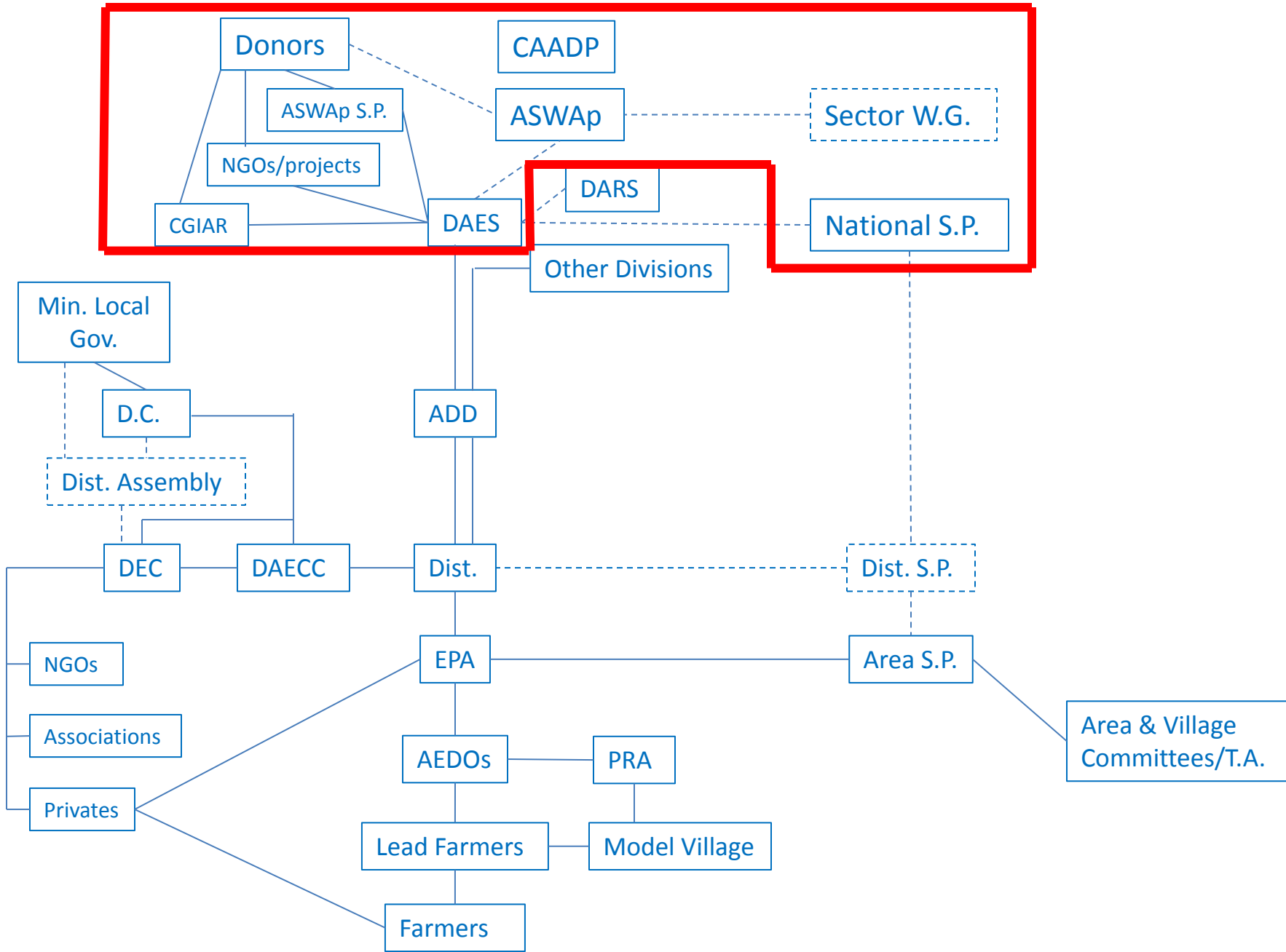


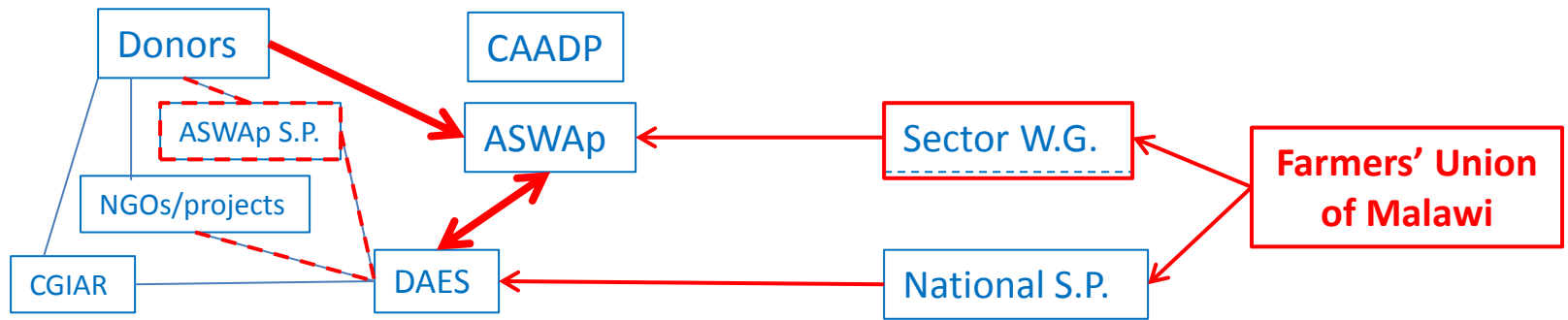


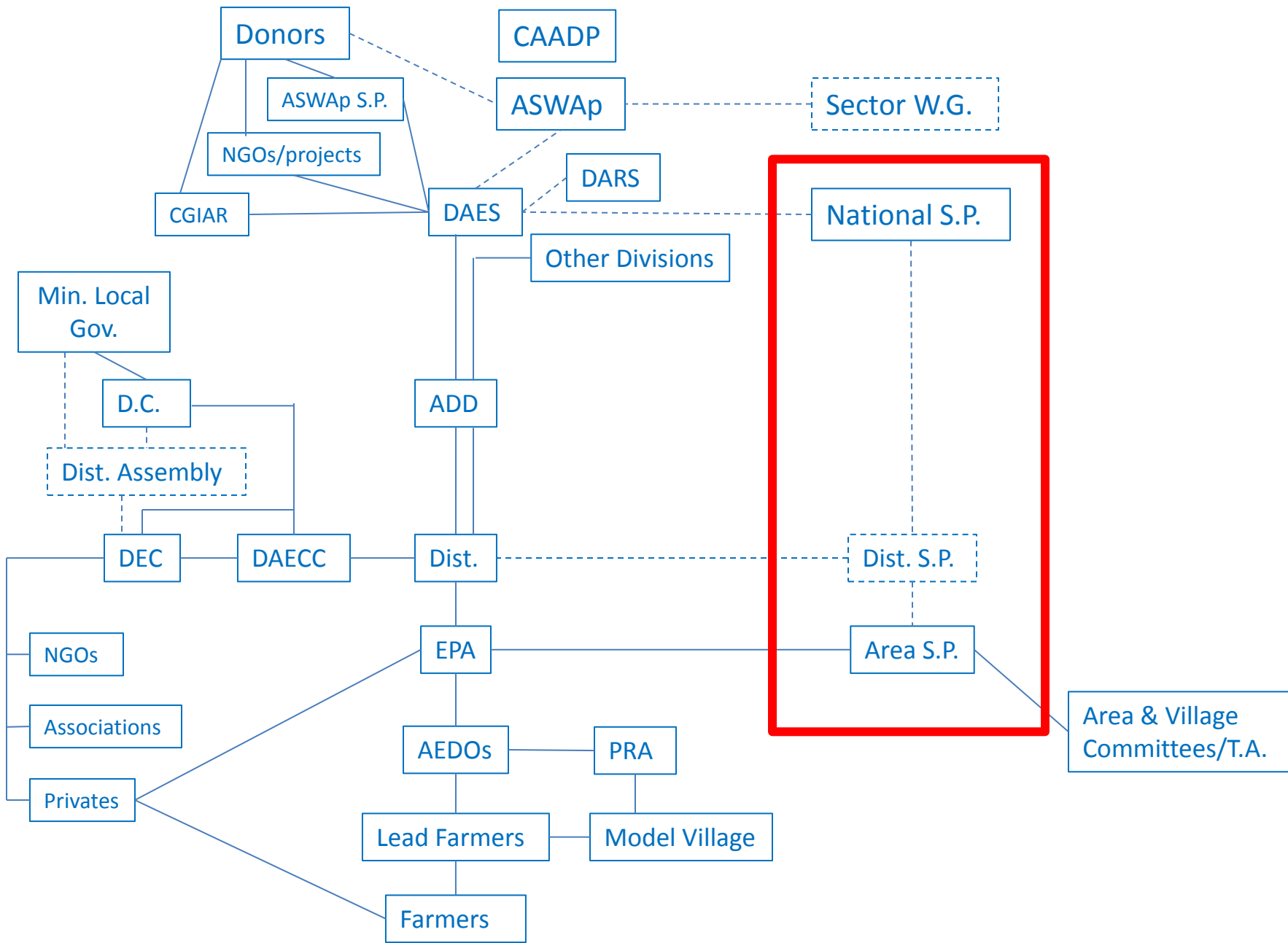


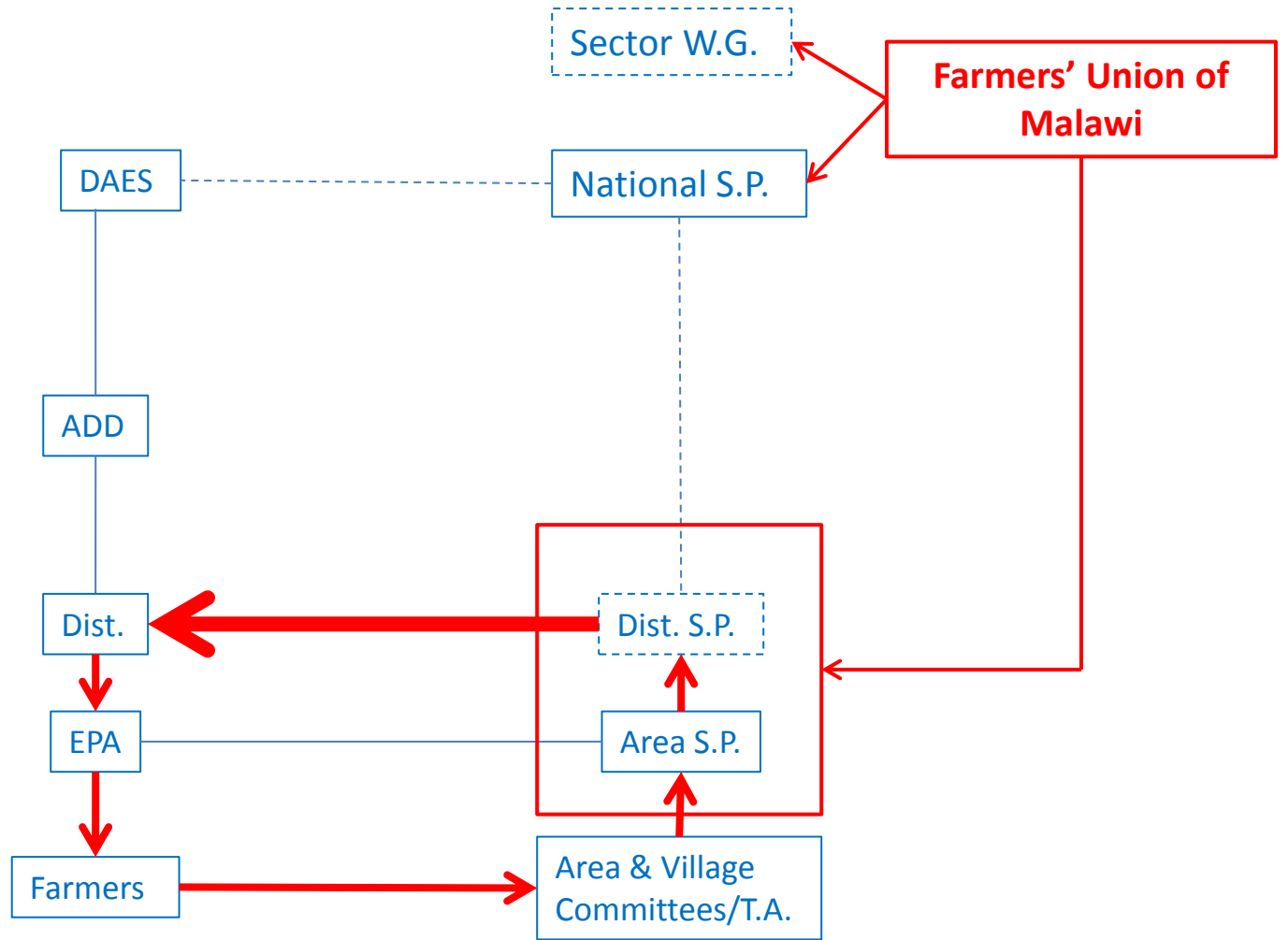


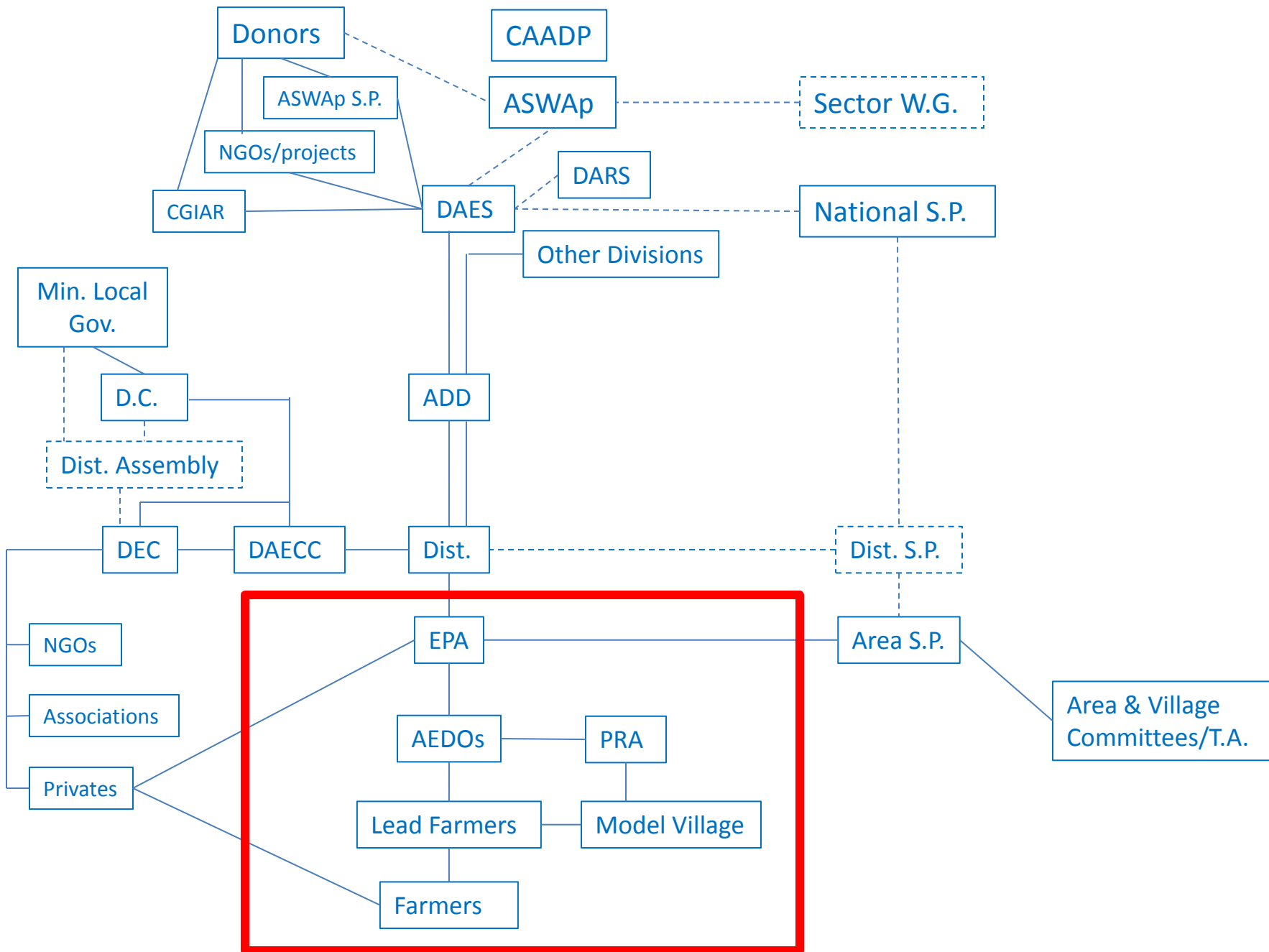




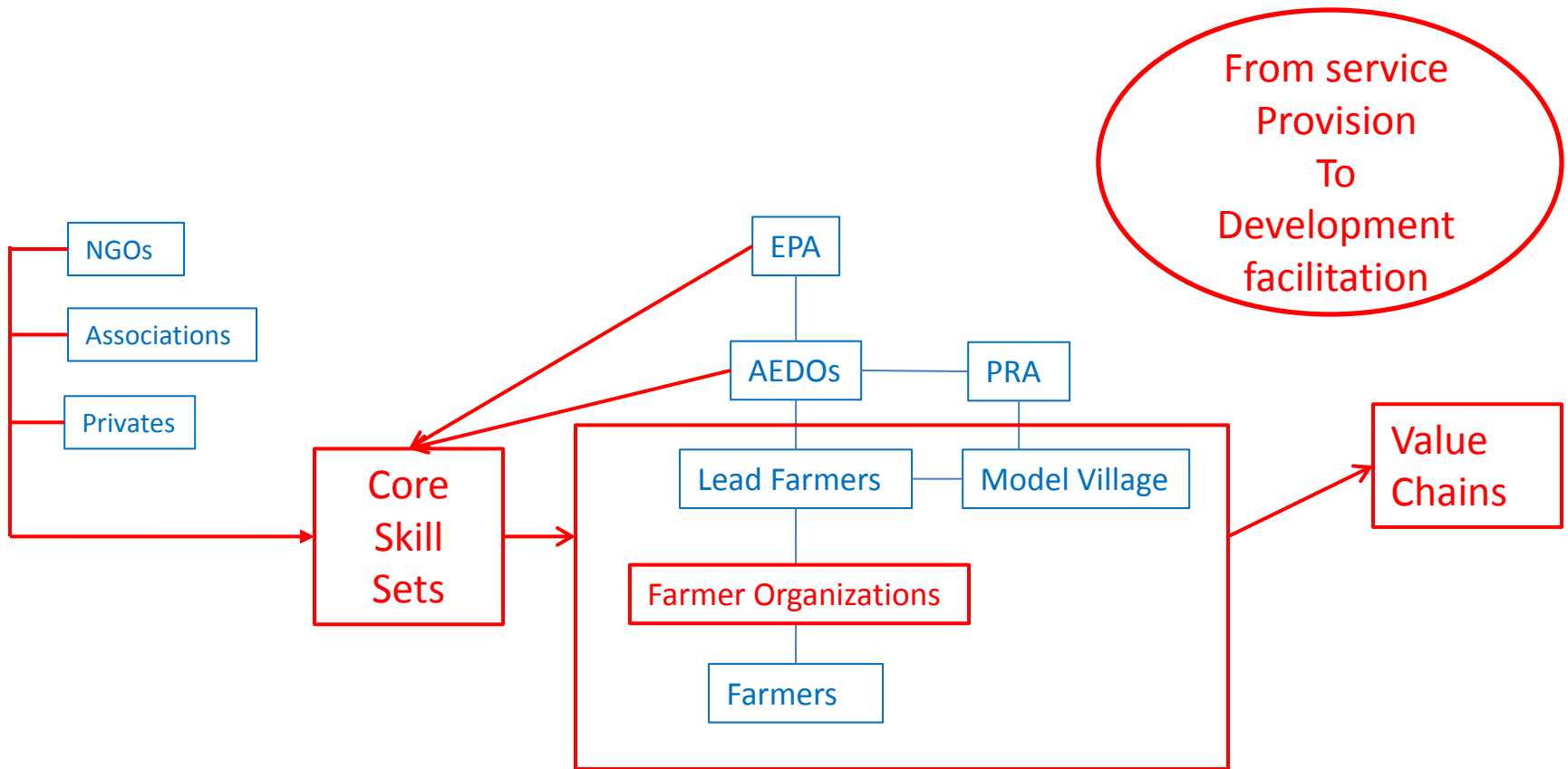










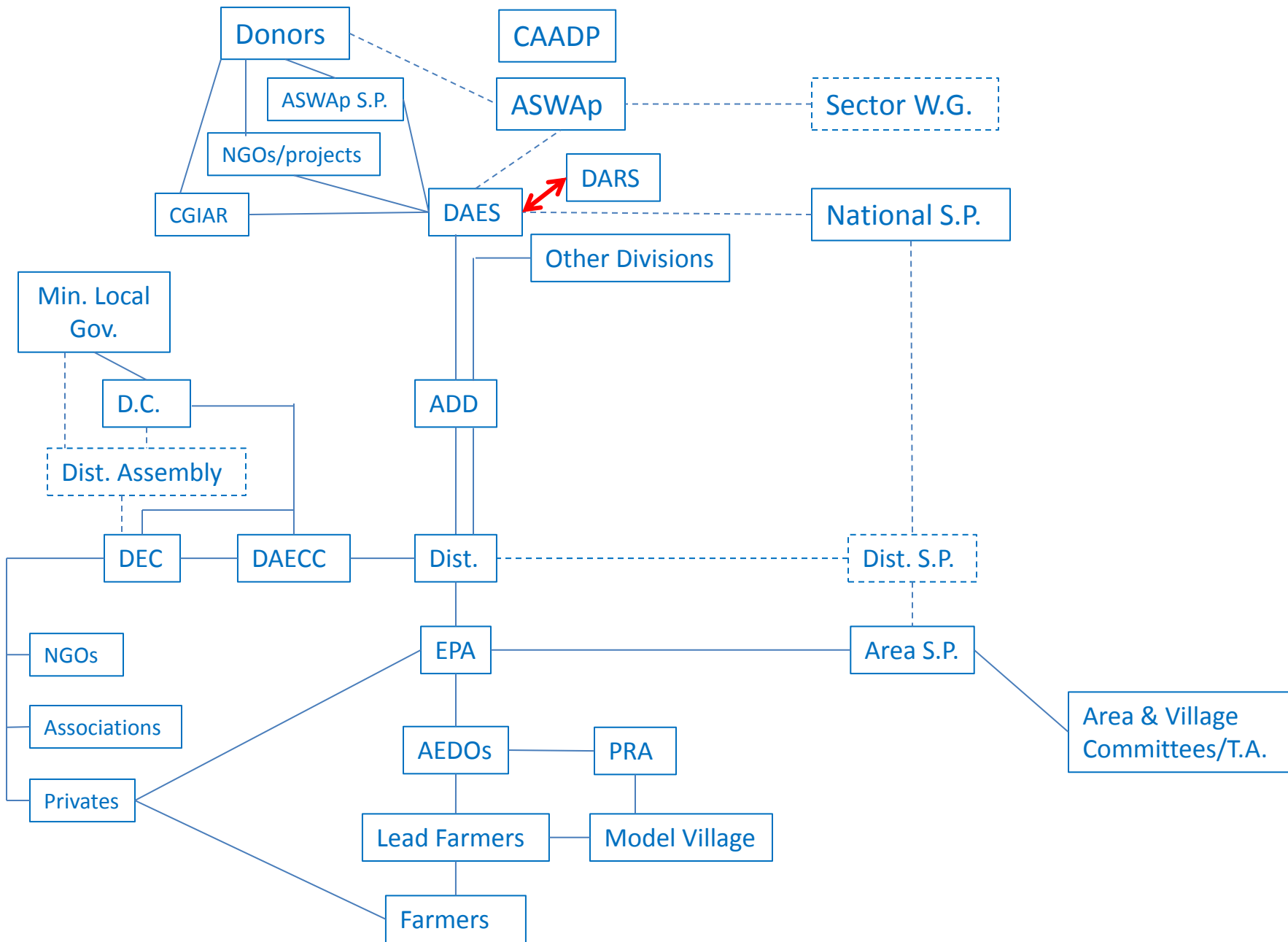


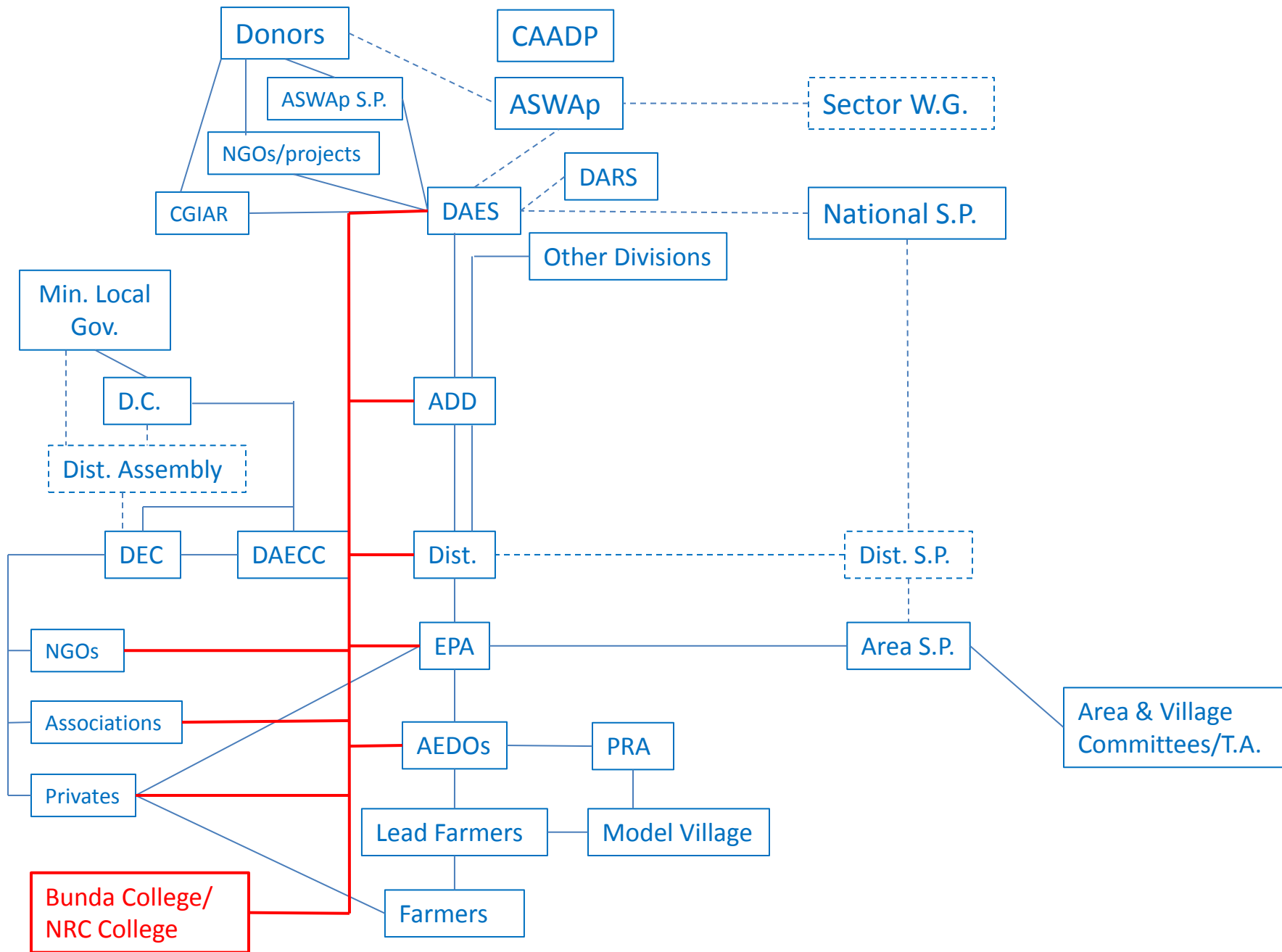
From service  
Provision  
To  
Development  
facilitation

Phased “rolling” staffing plan:

- Concentration of AEDO (4 – 6 years)
  - Market Oriented
  - Agro-ecologically appropriate
  - Synergism and sequencing of Core Skill Sets and Supporting Technologies
  - Farmer Groups/Model Villages
- “Graduation”
- Follow-on Support
  - Senior “Generalist”
  - Well-Equipped (motorcycle; cell phone; materials)

\* Addresses principal challenge of Human Resource/Financial constraints





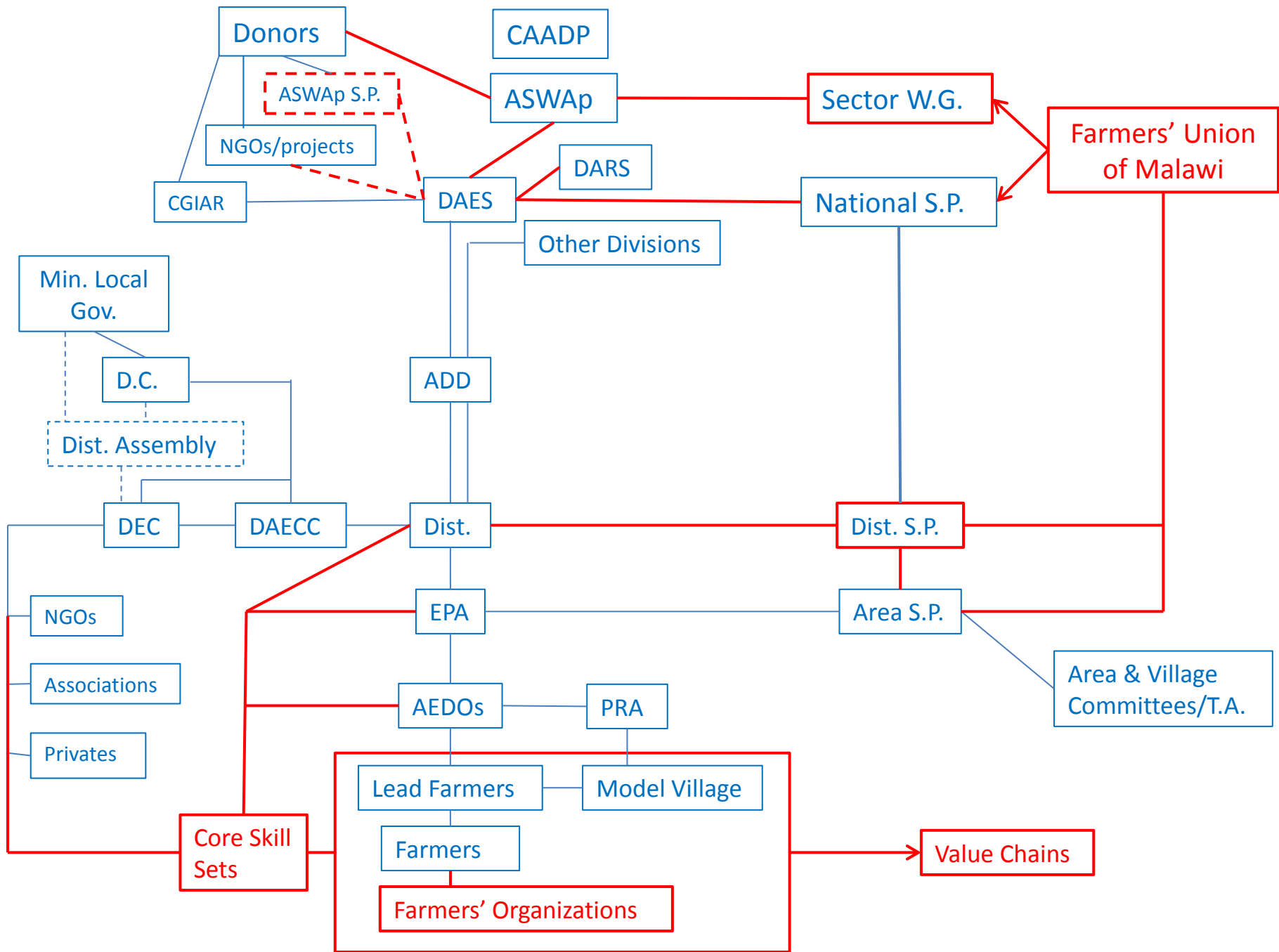
UNIVERSITY OF MALAWI  
BUNDA COLLEGE OF AGRICULTURE  
THIS COLLEGE CAMPUS HAS BEEN ESTABLISHED BY  
A CONTRIBUTION FROM THE PEOPLE OF  
UNITED STATES OF AMERICA TO THE PEOPLE OF MALAWI

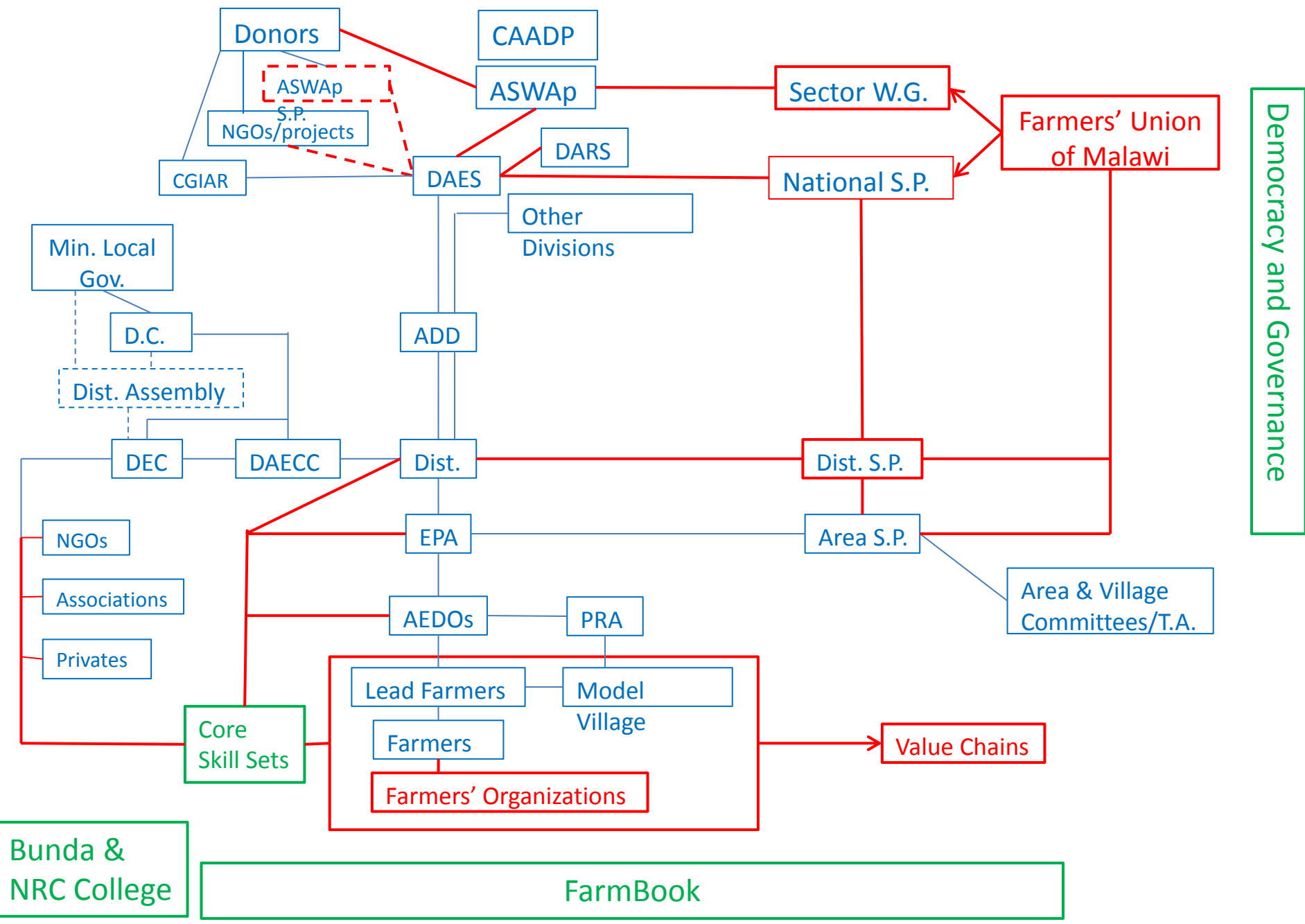
DEDICATED NOVEMBER 26, 1967

BY HIS EXCELLENCY

DR. H. KAMUZU BANDA

PRESIDENT OF THE REPUBLIC OF MALAWI  
AND CHANCELLOR OF THE UNIVERSITY





Democracy and Governance

Bunda & NRC College

FarmBook

Value Chains

Farmers' Organizations

Area & Village Committees/T.A.

Area S.P.

Dist. S.P.

National S.P.

Sector W.G.

Farmers' Union of Malawi

Other Divisions

DARS

DAES

ADD

Dist.

EPA

AEDOs

PRA

Lead Farmers

Model Village

Farmers

Core Skill Sets

NGOs

Associations

Privates

DEC

DAECC

D.C.

Dist. Assembly

Min. Local Gov.

CGIAR

S.P. NGOs/projects

ASWAp

Donors

CAADP

ASWAp

DAES

Other Divisions

ADD

Dist.

EPA

AEDOs

PRA

Lead Farmers

Model Village

Farmers

Core Skill Sets

NGOs

Associations

Privates

DEC

DAECC

D.C.

Dist. Assembly

Min. Local Gov.

CGIAR

S.P. NGOs/projects

ASWAp

Donors

CAADP

ASWAp

DAES

Other Divisions

ADD

Dist.

EPA

AEDOs

PRA

Lead Farmers

Model Village

Farmers

Core Skill Sets

NGOs

Associations

Privates

DEC

DAECC

D.C.

Dist. Assembly

Min. Local Gov.

CGIAR

S.P. NGOs/projects

ASWAp

Donors

CAADP

ASWAp

DAES

Other Divisions

ADD

Dist.

EPA

AEDOs

PRA

Lead Farmers

Model Village

Farmers

Core Skill Sets

NGOs

Associations

Privates

DEC

DAECC

D.C.

Dist. Assembly

Min. Local Gov.

CGIAR

S.P. NGOs/projects

ASWAp

Donors

CAADP

ASWAp

DAES

Other Divisions

ADD

Dist.

EPA

AEDOs

PRA

Lead Farmers

Model Village

Farmers

Core Skill Sets

NGOs

Associations

Privates

DEC

DAECC

D.C.

Dist. Assembly

Min. Local Gov.

CGIAR

S.P. NGOs/projects

ASWAp

Donors

CAADP

ASWAp

DAES

Other Divisions

ADD

Dist.

EPA

AEDOs

PRA

Lead Farmers

Model Village

Farmers

Core Skill Sets

NGOs

Associations

Privates

DEC

DAECC

D.C.

Dist. Assembly

Min. Local Gov.

CGIAR

S.P. NGOs/projects

ASWAp

Donors

CAADP

ASWAp

DAES

Other Divisions

ADD

Dist.

EPA

AEDOs

PRA

Lead Farmers

Model Village

Farmers

Core Skill Sets

NGOs

Associations

Privates

DEC

DAECC

D.C.

Dist. Assembly

Min. Local Gov.

CGIAR

S.P. NGOs/projects

ASWAp

Donors

CAADP

ASWAp

DAES

Other Divisions

ADD

Dist.

EPA

AEDOs

PRA

Lead Farmers

Model Village

Farmers

Core Skill Sets

NGOs

Associations

Privates

DEC

DAECC

D.C.

Dist. Assembly

Min. Local Gov.

CGIAR

S.P. NGOs/projects

ASWAp

Donors

CAADP

ASWAp

DAES

Other Divisions

ADD

Dist.

EPA

AEDOs

PRA

Lead Farmers

Model Village

Farmers

Core Skill Sets

NGOs

Associations

Privates

DEC

DAECC

D.C.

Dist. Assembly

Min. Local Gov.

CGIAR

S.P. NGOs/projects

ASWAp

Donors

CAADP

ASWAp

DAES

Other Divisions

ADD

Dist.

EPA

AEDOs

PRA

Lead Farmers

Model Village

Farmers

Core Skill Sets

NGOs

Associations

Privates

DEC

DAECC

D.C.

Dist. Assembly

Min. Local Gov.

CGIAR

S.P. NGOs/projects

ASWAp

Donors

CAADP

ASWAp

DAES

Other Divisions

ADD

Dist.

EPA

AEDOs

PRA

Lead Farmers

Model Village

Farmers

Core Skill Sets

NGOs

Associations

Privates

DEC

DAECC

D.C.

Dist. Assembly

Min. Local Gov.

CGIAR

S.P. NGOs/projects

ASWAp

Donors

CAADP

ASWAp

DAES

Other Divisions

ADD

Dist.

EPA

AEDOs

PRA

Lead Farmers

Model Village

Farmers

Core Skill Sets

NGOs

Associations

Privates

DEC

DAECC

D.C.

Dist. Assembly

Min. Local Gov.

